

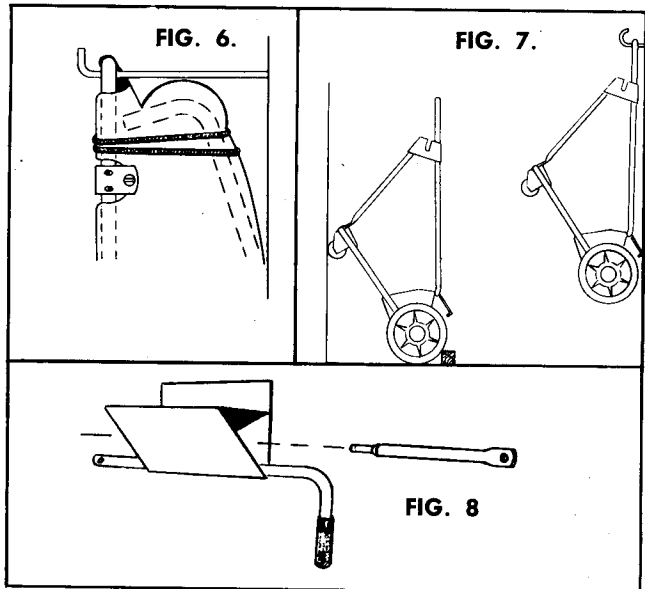
VEGER

LUBRICATON:

1. Pinion and Wheel Gear: Remove wheel and apply grease to teeth on wheel and pinion gear (Lubriplate 130AA or equal.) **Caution: Do not apply grease to center area of pinion.**
2. Pin Pawl: Apply light oil to Pin Pawl. Heavy oil or grease causes pawl to hang up inside Pinion Gear.
3. Bearings: Light oil, **not grease**, should be applied to brush axle once or twice a season.
4. Wheel Axle: Lubricate wheel axle once or twice a season.
5. Pivot Pins: An occasional drop of oil on Pivot Pins will prevent rust and insure free movement.

STORAGE:

1. Before storing unit for winter, clean it thoroughly.
2. Lubricate unit and wipe metal parts with oily rag.
3. Remove Support Tubes, fold bottom Hamper Tubes and wrap Dump Rope around hamper and secure for compact storage. Hang folded hamper from hooks on wall. See Fig 6.
4. Remove Brush Adjustment Tube (51).
5. Remove Hitch Assembly. Lean or hang complete assembly on wall.
6. Block sweeper wheels and lean unit against wall or hang complete Chassis and Frame Assembly on heavy hooks. See Fig. 7.



7. Store Adjustment Tube and Support Tubes in wheel blocks nailed to storage area wall. See Fig. 8.
8. **IMPORTANT:** Store unit in a safe, protected, clean dry area.

PARTS LIST

11-18-53

When ordering parts always list Part No. and name of Part.

Parts available only through Authorized Dealers.

(Specifications subject to change without notice.)

Item No.	Part No.	Description	Number Req'd.		
			Model 7-2511 31"	Model 7-2512 31"	Model 7-2521 38"
1	908017-4	Screw — Cap $\frac{5}{16}$ -18 x $\frac{3}{4}$ Hex Hd.	6	6	6
2	915112-6	Nut $\frac{5}{16}$ -18	5	5	5
3	920008-4	Washer — $\frac{3}{16}$ SAE	7	7	7
4	920011-5	Washer — $\frac{1}{2}$ SAE	6	6	6
5	908019-4	Hex Cap Screw $\frac{3}{16}$ -18 x 1	5	5	5
6	908020-4	Hex Cap Screw $\frac{3}{16}$ -18 x $1\frac{1}{4}$	12	12	12
7	908021-4	Hex Cap Screw $\frac{3}{16}$ -18 x $1\frac{1}{2}$	1	1	2
8	4736	"E" Ring	4	4	4
9	908015-4	Hex Cap Screw $\frac{3}{16}$ -18 x $\frac{1}{2}$	4	4	8
10	908058-4	Hex Cap Screw $\frac{1}{2}$ -13 x $1\frac{1}{4}$	2	2	2
11	915111-6	Locknut $\frac{1}{4}$ -20	3	3	1
12	915002-6	Locknut $\frac{3}{8}$ -24	2	2	2
13	101551	Nut — Pilot $\frac{5}{16}$ -18	1	1	1
14	908022-4	Hex Cap Screw	1	1	1
15	101552	Bolt — Carriage $\frac{3}{16}$ -18 x $\frac{3}{8}$	4	4	4
16	101553	Spring — Brush Holder	12	12	18
17	915002-6	Locknut — $\frac{3}{8}$ -24	2	2	2
18	101554	Bolt — Eye $\frac{1}{4}$ -20 x 2	1	1	1
19	101555	Bolt — Eye $\frac{3}{16}$ -18 x $2\frac{3}{4}$	1	1	1
20	101556	Stud — Caster	2	2	2
21	915115-6	Locknut — $\frac{1}{2}$ -13	2	2	2
22	915112-6	Locknut — $\frac{5}{16}$ -18	53	53	53
23	101557	Bolt — Tube $\frac{5}{16}$ -18 x $1\frac{1}{4}$	4	4	4
24	101558	Bolt — Tube $\frac{5}{16}$ -18 x 1	12	12	8
25	908005-4	Hex Cap Screw $\frac{1}{4}$ -20 x 1	2	2	0
25	933186	Rollpin — $\frac{3}{16}$ x $\frac{3}{8}$	0	0	4
26	4733	Hub Cap	2	2	2
27	101559	Bearing — Flanged	2	2	2
28	4705	Wheel Ass'y.	2	2	2
29	4715	Gear — Pinion	2	2	2
30	101560	Pawl — Pinion	2	2	2
31	101561	Bracket — Caster	2	2	2
32	101562	Axle — Brush Stud	2	2	0
32	102500	Axle — Brush Stud	0	0	2
33	101563	Caster — Roller	2	2	2
34	101564	Brush — Strip	3	3	0
34	102501	Brush — Strip	0	0	6
35	101565	Tire	2	0	0

Item No.	Part No.	Description	Number Req'd.		
			Model 7-2511 31"	Model 7-2512 31"	Model 7-2521 38"
35	102492	Tire 10" x 2.25	0	2	2
36	101566	Caster, Plate Ass'y.	2	2	2
37	101567	Shield — Wheel	2	2	2
38	101568	Bracket — Frame Pivot	4	4	4
39	101569	Bracket — Hamper Pivot	1	1	1
40	101570	Pin — Pivot	2	2	2
41	101571	Axle — Wheel Stud	2	2	2
42	101572	Tube — Pivot Stand	1	1	0
42	102502	Tube — Pivot Stand	0	0	1
43	101573	Rod — Hamper Tie	1	1	0
43	102503	Rod — Hamper Tie	0	0	1
44	101574	Oiler	2	2	2
45	101575	Hitch — U Bar	1	0	0
45	102493	Hitch — U Bar	0	1	0
45	102504	Hitch — U Bar	0	0	1
46	101576	Spacer	2	0	0
46	101577	Spacer	2	2	4
47	101578	Spring — Adjustment	1	1	1
48	101579	Rope — Dump	1	1	1
49	101580	Tongue — Hitch	1	0	0
49	102505	Tongue — Hitch	0	1	1
50	101581	Tube — Spring	1	1	1
51	101582	Tube — Adjustment	1	1	1
52	101583	Brace — Pivot Stand	2	2	2
53	101584	Brace — Pivot Stand	2	0	0
53	102506	Brace — Pivot Stand	0	2	2
54	101585	Tube — R. H. Support	1	1	1
55	101586	Tube — L. H. Support	1	1	1
56	101587	Tube — Top Hamper	1	1	0
56	102507	Tube — Top Hamper	0	0	1
57	101588	Tube — Side Hamper	2	2	2
58	101589	Tube — Hamper Support	2	2	2
59	101590	Tube — Bottom	2	2	2
60	101591	Support — R. H. Pivot	1	1	1
60	101592	Support — L. H. Pivot	1	1	1
61	101593	Stiffner — Bar	1	0	0
61	102495	Stiffner — Bar	0	1	0
61	102508	Stiffner — Bar	0	0	1
62	101594	Rod — Rear Hamper	1	1	0

REFR

PARTS LIST (continued)

When ordering parts always list Part No. and name of Part.
 Parts available only through Authorized Dealers.
 (Specifications subject to change without notice.)

Item No.	Part No.	Description	Number Req'd.			Item No.	Part No.	Description	Number Req'd.		
			Model 7-2511 31"	Model 7-2512 31"	Model 7-2521 38"				Model 7-2511 31"	Model 7-2512 31"	Model 7-2521 38"
62	102509	Rod — Rear Hamper	0	0	1	70	101602	Hamper — Ass'y.	1	1	0
63	101595	Grip — Handle	1	1	1	70	102513	Hamper — Ass'y.	0	0	1
64	101596	Bumper Ass'y.	1	0	0	71	101603	Latch — Hamper	1	1	1
64	102496	Bumper Ass'y.	0	1	0	72	101604	Spring — Latch	1	1	1
64	102510	Bumper Ass'y.	0	0	1	73	101605	Sleeve — Rubber	2	2	2
65	101597	Bracket — Pivot Ass'y.	1	1	1	74	908029-4	Hex Cap Screw $\frac{3}{16}$ -18 x 4	1	0	0
66	101598	Lever — Dump	2	2	2	75	915002-6	Nut — Hex $\frac{3}{8}$ -24	2	2	2
67	101599	Bracket — Adjustment	1	1	1	76	920083-4	Lockwasher — $\frac{3}{8}$ Split	2	2	2
68	101600	Axle — Brush	1	1	0	77	101606	Bracket — Hitch Pin	1	1	1
68	102511	Axle — Brush	0	0	1	*	102491	Decal Adjustment	1	1	1
69	101601	Shield — Ass'y.	1	1	0	*	8138	Decal, Wheel Horse	1	1	1
69	102512	Shield — Ass'y.	0	0	1						

* Not Illustrated

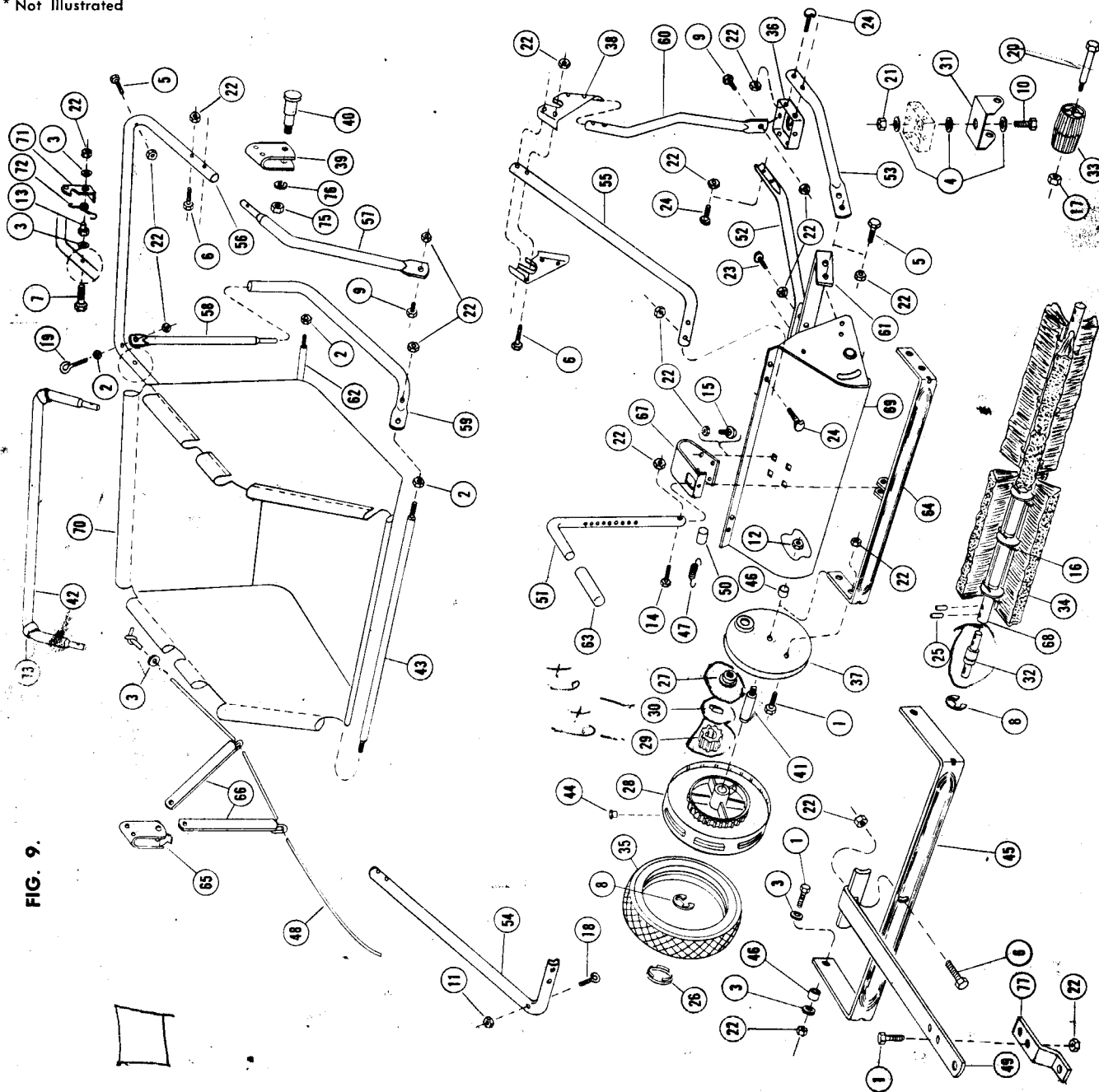


FIG. 9.

EXPLODED VIEW

PRINTED IN U.S.A.

8-15-71 FORM NO. A-5297

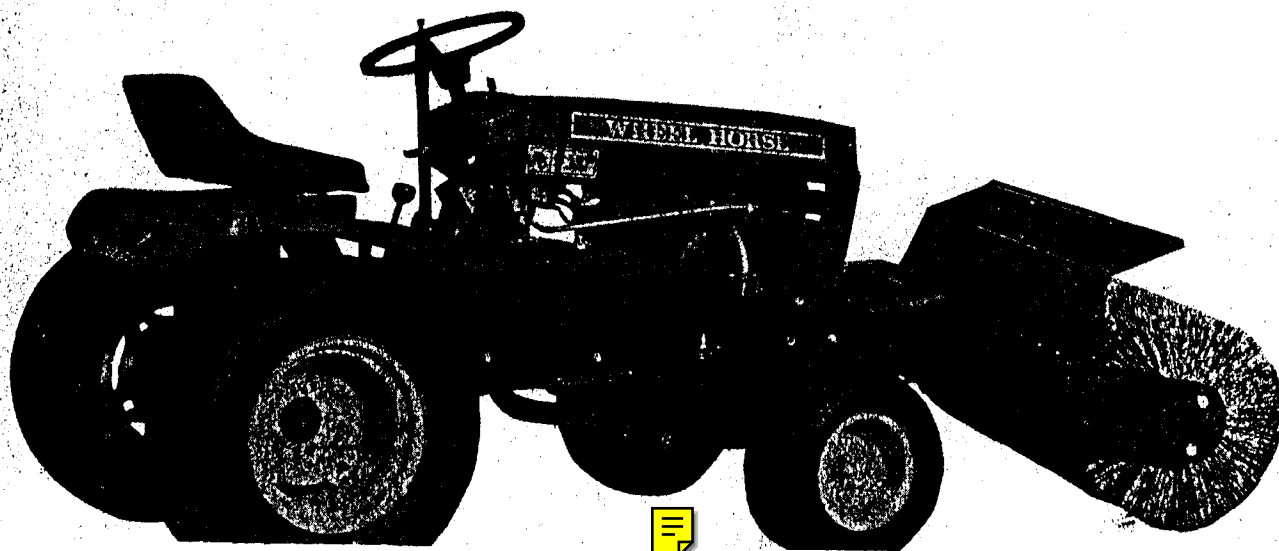
RESERVEDELSLISTE

for

L. W. 60050

&

L. W. 60051

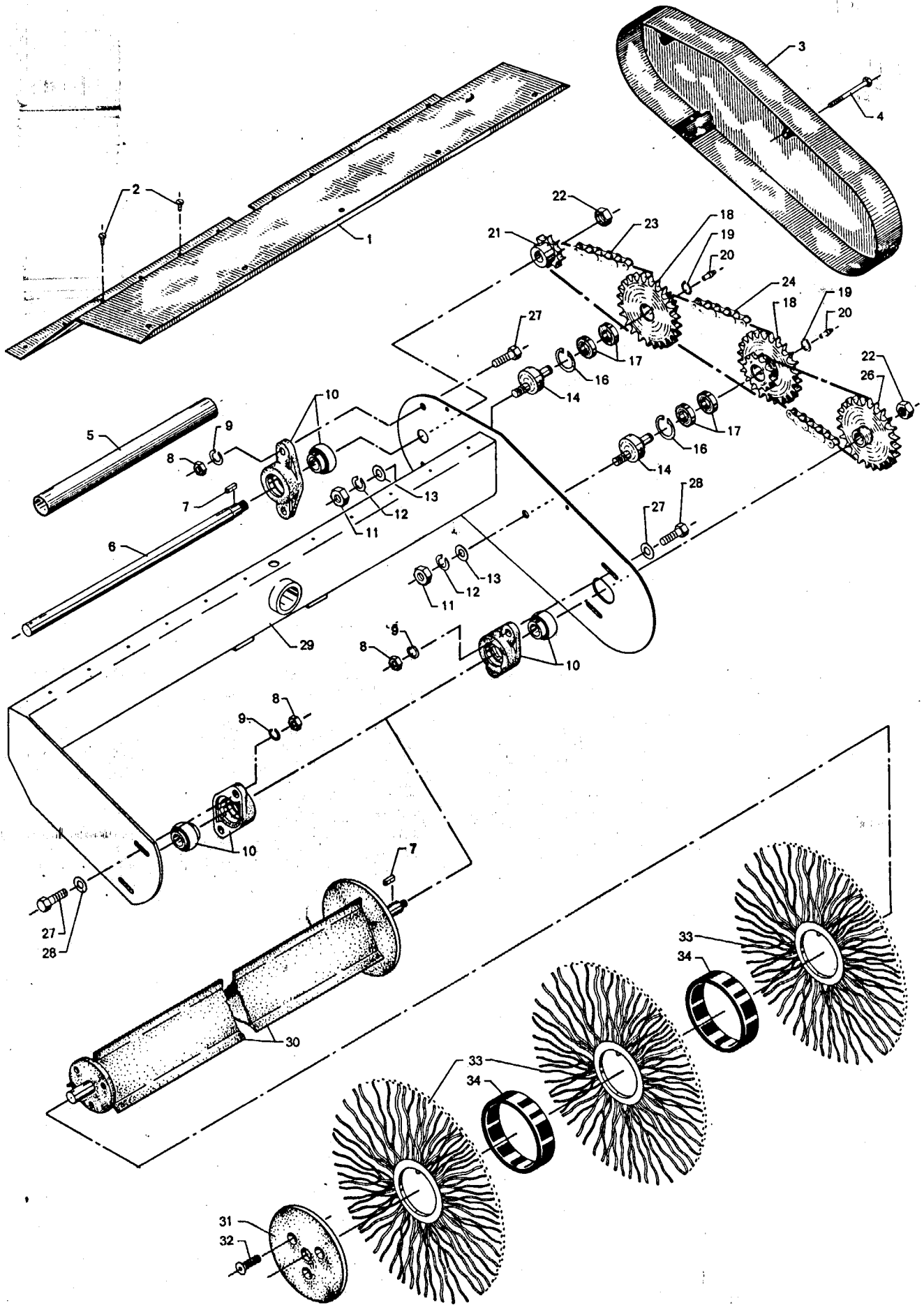


31-10-89

WH Frontveger (Simbol)
met vangsak Hyd.

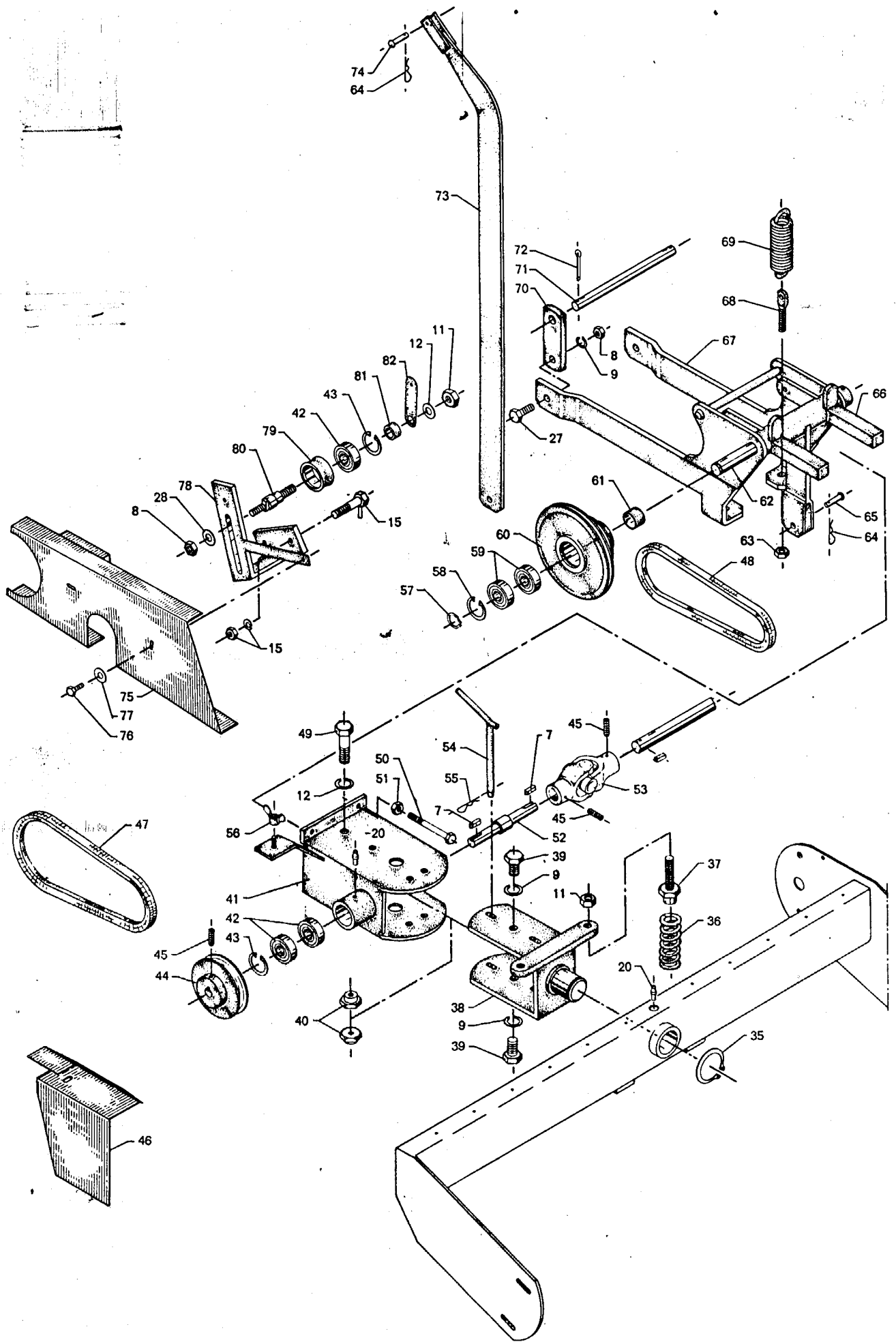
1	ketting	$5/8" \times 3/8"$	42	schakels
1	-	$5/8" \times 5/8"$	40	"

in & Søn ApS
kinfabrik
9) 391133
iO . Rynkeby



RYNKEBY — Fejemaskiner

Pos. nr.	Bestill. nr.	Benævnelse
1	007 601	Dækskærm
2	007 602	Pladeskrue
3	007 603	Kædeskærm
4	007 604	Bolt
5	007 605	Beskyttelsesrør
6	007 606	Mellemaksel
7	007 607	Wodrufnot
8	007 608	Møtrik
9	007 609	Fjederskive
10	007 610	Flangeleje
11	007 611	Møtrik
12	007 612	Fjederskive
13	007 613	Spændeskive
14	007 614	Ekcentrik
15	007 615	Bolt
16	007 616	Låsering
17	007 617	Leje
18	007 618	Dobbelt kædehjul
19	007 619	Låsering
20	007 620	Smørenippel
21	007 621	Kædehjul
22	007 622	Møtrik
23	007 623	Kæde
24	007 624	Kæde
25	007 625	Kæde
26	007 626	Kædehjul
27	007 627	Bolt
28	007 628	Spændeskive
29	007 629	Hovedramme
30	007 630	Børsteaksel
31	007 631	Flange
32	007 632	Bolt
33	007 633	Vejfejerling
34	007 634	Afstandsring



RYNKEBY — Fejemaskiner

Pos. nr.	Bestill. nr.	Benævnelse
35	007 635	Låsering
36	007 636	Trykfjeder
37	007 637	Fjederbolt
38	007 638	Kardanhusbøjle
39	007 639	Bolt
40	007 640	Kravemøtrik
41	007 641	Kardanhus
42	007 642	Leje <i>25-52-15</i>
43	007 643	Låsering
44	007 644	Kileremskive
45	007 645	Pinolskrue
46	007 646	Skærm
47	007 647	Kilerem
48	007 648	Kilerem
49	007 649	Bolt
50	007 650	Bolt
51	007 651	Møtrik
52	007 652	Forlagsaksel
53	007 653	Kardanled
54	007 654	Vinkelbolt
55	007 655	Hårnålesplit
56	007 656	Fløjmmøtrik
57	007 657	Låsering
58	007 658	Låsering
59	007 659	Leje
60	007 660	Kileremskive
61	007 661	Bøsning
62	007 662	Aksel
63	007 663	Møtrik
64	007 664	Hårnålesplit
65	007 665	Splitbolt
66	007 666	Ophængshorn
67	007 667	Ophængsramme
68	007 668	Fjederbolt
69	007 669	Trækfjeder
70	007 670	Mellemstykke
71	007 671	Aksel
72	007 672	Split
73	007 673	Bundstang
74	007 674	Splitbolt
75	007 675	Skærm
76	007 676	Bolt
77	007 677	Skive
78	007 678	Beslag for strammerulle
79	007 679	Strammerulle
80	007 680	Tap for strammerulle
81	007 681	Afstandsring
82	007 682	Beslag